



Investor Presentation

The following disclaimer applies to this Presentation. For the purposes of this disclaimer, “Presentation” means this document, its contents or any part of it, any oral presentation, any question or answer session and any written or oral material discussed or distributed during the Presentation meeting. The purpose of this Presentation is to provide an overview of Beckley Psytech Ltd (the “Company”). The information in this Presentation is not intended to form the basis of any contract. This Presentation does not constitute an offer or invitation for the sale, issuance or purchase of securities or any businesses or assets described in it, nor does it give or purport to give legal, tax or financial advice. Nothing herein shall be taken as constituting the giving of investment advice or an inducement to enter into investment activity in any jurisdiction and this Presentation is not intended to provide, and must not be taken as, the basis of any decision and should not be considered as an invitation, inducement, solicitation or recommendation to purchase, underwrite, subscribe for or otherwise acquire any securities of the Company. The recipient must make its own independent assessment and such investigations as it deems necessary. Save as set out below, the Presentation has been prepared on the basis of information held by the Company and also from publicly available information. This information, which does not purport to be comprehensive, has not been independently verified by or on behalf of the Company. The Presentation does not constitute an audit or due diligence review and should not be construed as such.

Neither the Company nor any of such its respective directors, officers, employees, affiliates, advisers or agents (the “Associates”) accepts any responsibility, obligation or liability whatsoever for, or makes any representation or warranty, express or implied, as to, and no reliance should be placed on, the fairness, truth, fullness, accuracy, completeness or correctness of, the information in this Presentation or whether any information has been omitted from the Presentation or as to any other information relating to the Company, whether written, oral or in a visual or electronic form, and howsoever transmitted or made available or for any loss howsoever arising from any use of this Presentation, its contents or otherwise arising in connection therewith. Except where otherwise indicated in the Presentation, the information provided therein is based on matters as they exist at the date of preparation of the Presentation and not as of any future date and will be subject to updating, revision, verification and amendment without notice and such information may change materially. Neither the Company nor any of its Associates is under an obligation to update, revise or keep current the information contained in this Presentation to which it relates or to provide the recipient of this Presentation with access to any additional information that may arise in connection with it and any opinions expressed in this Presentation are subject to change without notice. Nothing contained in this Presentation is or should be relied upon as a promise or representation as to the future.

The content of this promotion has not been approved by an authorised person within the meaning of the Financial Services and Markets Act 2000 and is intended only for those investors who meet the criteria set out in sections 48 and 50 of The Financial Services and Markets Act 2000 (Financial Promotion) Order 2005. Reliance on this promotion for the purpose of engaging in any investment activity may expose an individual to a significant risk of losing all of the property or other assets invested.



“ The reset switch had been pressed so everything could run properly, thoughts could run more freely, all these networks could work again. It unlocked certain parts which were restricted before. ”

Patient quote from the Beckley-Imperial
psilocybin treatment resistant depression study



Our Mission

Our mission is to help patients suffering from neuropsychiatric disorders by developing a pipeline of psychedelic compounds into licensed pharmaceutical medicines.



Beckley Psytech: A leading Psychedelic Drug Development Platform positioned for significant growth

01

Developing **psychedelic compounds** as a **transformative new class** of medicine for neuropsychiatric diseases.

02

Team combines unmatched **psychedelic research and drug development expertise** and has **proven track-record of success** in biotech startups.

03

Drug development **platform approach to manage risk and maximise commercial value.**

04

Company is **raising \$18m** to advance core programs through key development milestones as set out in this presentation.



The Beckley Advantage: An unparalleled track record of pioneering psychedelic science and building successful biotech startups



BECKLEY
FOUNDATION

20+ Years Experience

Co-Founder Amanda Feilding set up the Beckley Foundation in 1998.

50+ Publications

with groundbreaking results including:

1st Brain imaging studies on LSD and psilocybin.

1st Psilocybin Treatment Resistant Depression study.

1st LSD micro-dosing clinical study.



BECKLEY
CANOPY
THERAPEUTICS

Startup Success

Core leadership team founded biotech company in 2018.

Successful Exit

Sold company in 2019 to Canopy Growth Corporation.

3.3x

More than a 3.3x return for investors in 13 months.



Part one

The Opportunity



The Problem: A global epidemic of psychiatric & neurological disease with huge unmet need for more effective treatments



1 in 4 people

Suffering from neurological and psychiatric disorders.



\$6 trillion

Anticipated cost of treating global mental illness by 2030.



33% of patients

Resistant to available treatments.

The Opportunity: Psychoactive and naturally-derived drugs are proving to be effective pharmaceutical medicines

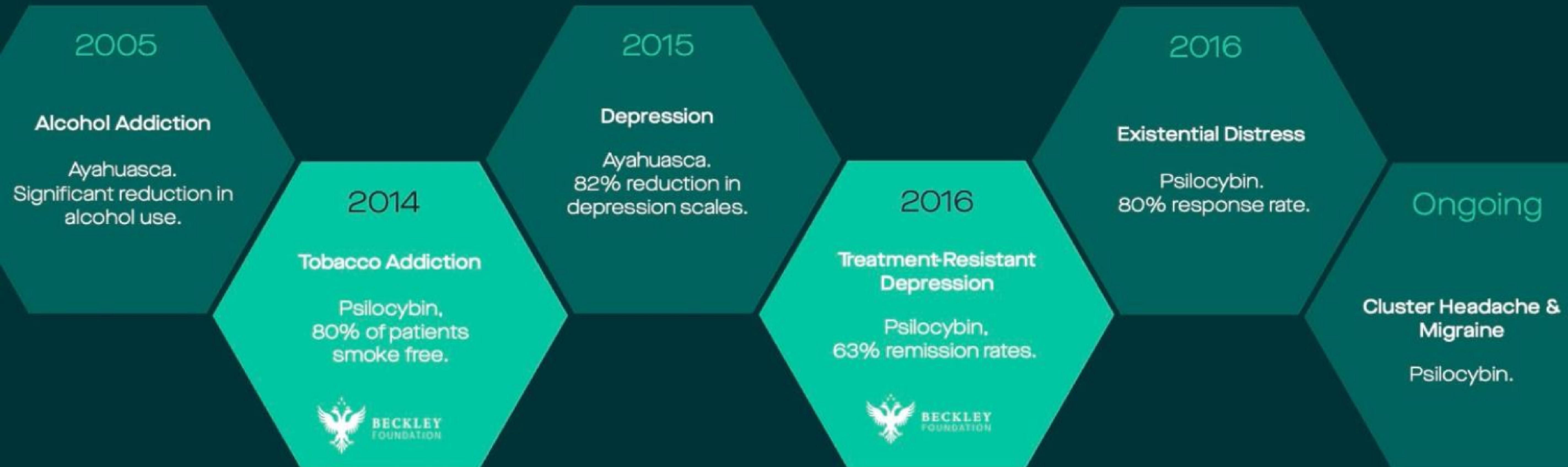
 **Epidiolex**[®]
(cannabidiol)

- GW Pharma cannabis-based pharmaceutical for rare pediatric epilepsy.
- FDA approved.
- \$2bn peak sales forecast.

Spravato[®] 
(esketamine) 
nasal spray

- Johnson & Johnson ketamine-derivative pharmaceutical for treatment-resistant depression.
- FDA approved.
- \$1.35bn peak sales forecast.

Psychedelics: A new class of neuropsychiatric treatment with blockbuster potential, but further pharmaceutical development is needed



Why Now? Powerful macroeconomic drivers offer a window of opportunity and Beckley Psytech is uniquely positioned as a leader in this emerging market

Bloomberg

“Move Over, Pot: Psychedelic Companies Are About to Go Public”

February 2020

Forbes

“5-MeO-DMT: The 20-Minute Psychoactive Toad Experience That’s Transforming Lives”

February 2020



“Steady maturing of the field of psychedelic drug treatments”

December 2019

\sifted/

“Are Psychedelic drugs headed for the mainstream”

June 2020

WIRED

“Inside the Mind of Amanda Feilding, Countess of Psychedelic Science”

February 2018

Daily Mail

“Second Psilocybin Trial Gets FDA Breakthrough Status”

November 2019



Part two

Strategy & Team



Drug Development Platform: Building a portfolio of psychedelic assets to manage risk and maximise commercial potential

1st Generation Program

Progressing innovative formulations and novel applications of well-characterized psychedelic agents.

2nd Generation Program

Develop known but under-researched psychedelic agents offering stronger IP, clinical, and patient access advantages.

3rd Generation Program

Design New Chemical Entities (NCEs) that improve upon existing psychedelics by providing better patient and health economic outcomes.



Leadership Team: World-leading psychedelic researchers, drug development experts and business shapers with proven success



Cosmo Feilding Mellen

Director, CEO



Lady Amanda Feilding

Director, Chair Scientific Advisory Board



Marc Wayne

Chairman of Board



Dr. Steve Wooding

MBBS, MBA, FFPM
Director, Chief Scientific Officer



Michael Norris

FCMA
Director, Chief Financial Officer



Tim Mason

MSc
Chief Development Officer



Dr Fiona Dunbar

MB BCh, FFPM
Chief Medical Advisor



Kalpana Sawant

MSc
Director of Clinical Operations



Becky Hutchinson

MBA
Commercial Director



Ilgi Kim

MSc, MBA
Corporate Board Advisor



Visit www.becklepsytech.com for detailed bios

Scientific Advisors: Providing world-leading expertise across the development pathway and scientific objectivity to our decision making

Chair of Scientific Advisory Board

Lady Amanda Feilding



BECKLEY
FOUNDATION

Clinical Psychiatry

Prof Guy Goodwin



Psychedelic Therapy

Fred Reinholdt



Psychedelic Science

Prof Matthew Johnson



Psychedelic Science

Dr Robin Carhart Harris

Imperial College

Translational Science

Prof Joanna Neil



Clinical Operations

Dr Mike Emanuel

Sinto Pharma



Global Research Network: Close strategic partnership with the Beckley Foundation opens up opportunities from a network of ongoing and future research collaborations around the world

Beckley Foundation can provide:



Beckley Psytech is committed to improving the lives of patients in need and will donate a share of future revenues to fund the non-profit work of the Beckley Foundation.



Part three

Research & Competitive Position

Competitive Positioning: Each program offers clear market differentiation with clinical and commercial advantages

1st Generation (Confidential)

- Differentiated application, market segment, and treatment model.
- Additional data and market exclusivity protections.

2nd Generation 5-MeO-DMT

- Early Mover in 5-MeO-DMT.
- Strong potential for innovation, IP, and market exclusivity protection.
- Significant market access and resource efficiencies over longer-acting psychedelics.

3rd Generation NCEs

- Composition of matter IP
- Potential clinical and safety advantages over existing psychedelic compounds.

Beckley Deep Labs

- Horizon scanning to guide advanced research and differentiated development programs.
- Accelerated expansion of the Beckley Psytech platform with pioneering partnerships.



In Depth - 5-MeO-DMT: “2nd Generation” psychedelic medicine with significant patient access, commercial, and IP advantages

Clinical Differentiation

Short-acting & potent.

Reliable induction of peak experience.

Unique receptor binding profile

Regulatory & IP Opportunities

Data exclusivity.

De-risked for unexpected safety signals due to extensive human use.

Early mover advantage presents multiple IP opportunities.

Formulation Design

Intellectual Property.

Customized for preferred PK profile.

Patient friendly.

Research Attractiveness

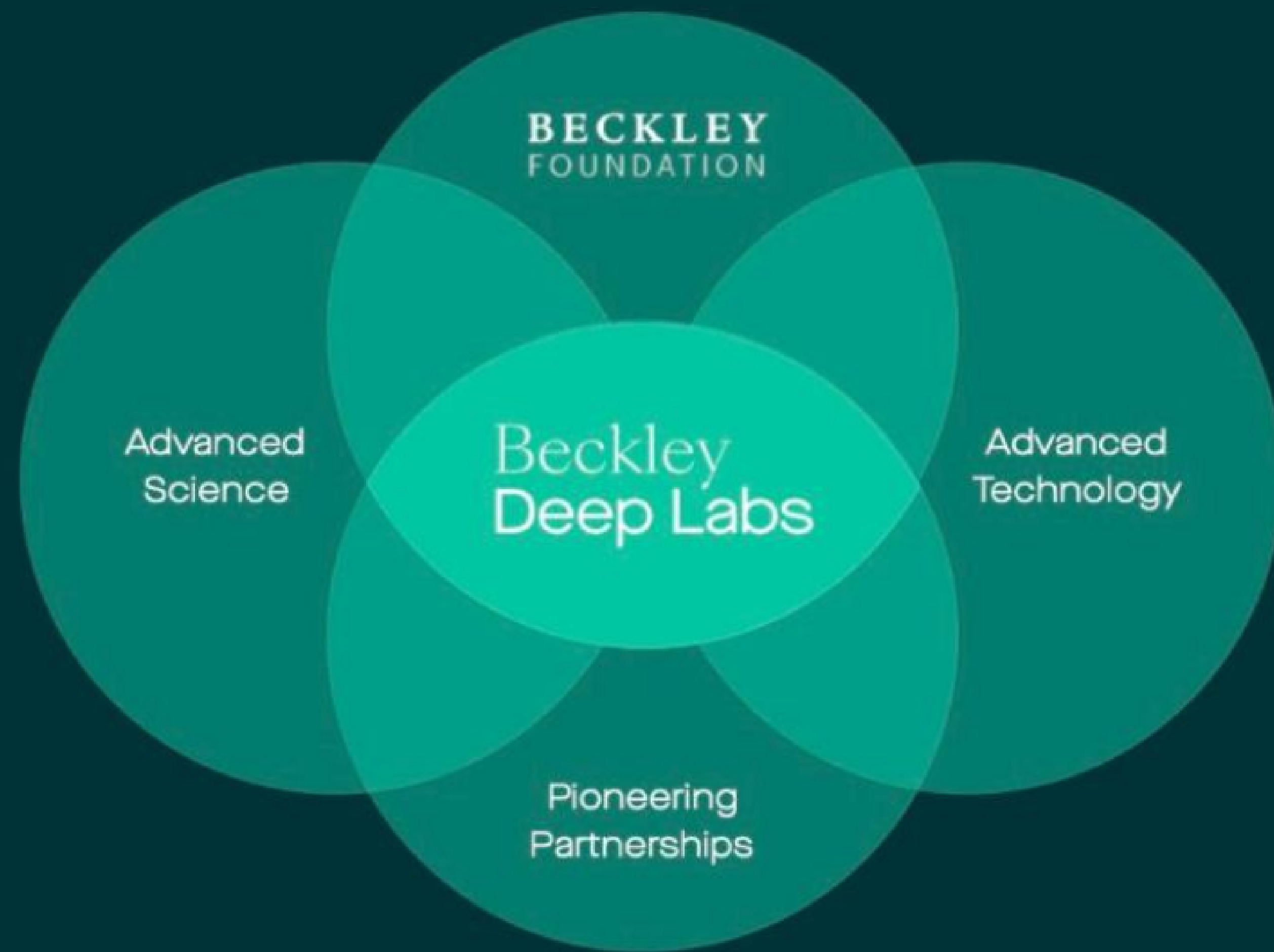
Top KOLs attached to study.

High level of anecdotal & observational reports of therapeutic efficacy in depression, addiction, and anxiety.

Clinical research needed.



Beckley Deep Labs: Advanced research division driving innovation, finding next generation programs, and staying at the forefront of psychedelic research



Initial areas of focus:



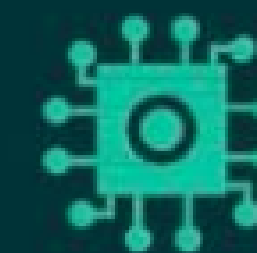
AI / Machine Learning to accelerate and improve clinical development outcomes.



Novel psychedelic therapeutic applications in preclinical disease models.



Signal finding and mechanistic research to inform NCE development program.



Advanced technologies for enhanced therapeutic outcomes.

Right Projects, Right Team, Right Time.

- Beckley Psytech is a leader in the emerging psychedelic medicines market and positioned for significant growth.
- Team combines world-leading psychedelic research and drug development expertise and has proven track-record of success in biotech startups.
- Drug development platform approach to manage risk, offering significant upside and superior downside protection.
- **Fundraising:** Autumn 2020, we are raising \$18m in order to:
 - **1st Generation:** Conduct Proof-of-Concept trial in patients.
 - **2nd Generation:** Complete 'First in Man' Phase 1 trial in 5-MeO-DMT.
 - **3rd Generation:** Advance internal NCE development and target in-licensing opportunities
 - Launch advanced research programs through **Beckley Deep Labs**.

Thank you for your interest.
For more information email:
info@becklepsytech.com



Thank you for your interest
in becoming a Beckley
Psytech investor.

This presentation is strictly confidential and recipients must not disclose any written or verbal information provided to them in this presentation or thereafter to any third party, without the prior written consent of Beckley Psytech Ltd.



Browse the best pitch deck examples.

Brought to you by bestpitchdeck.com — the world's largest library of pitch decks: hundreds of winning presentations from leading startups, updated every week.

Read more →

Follow us [@pitchdecks](https://twitter.com/pitchdecks)

